

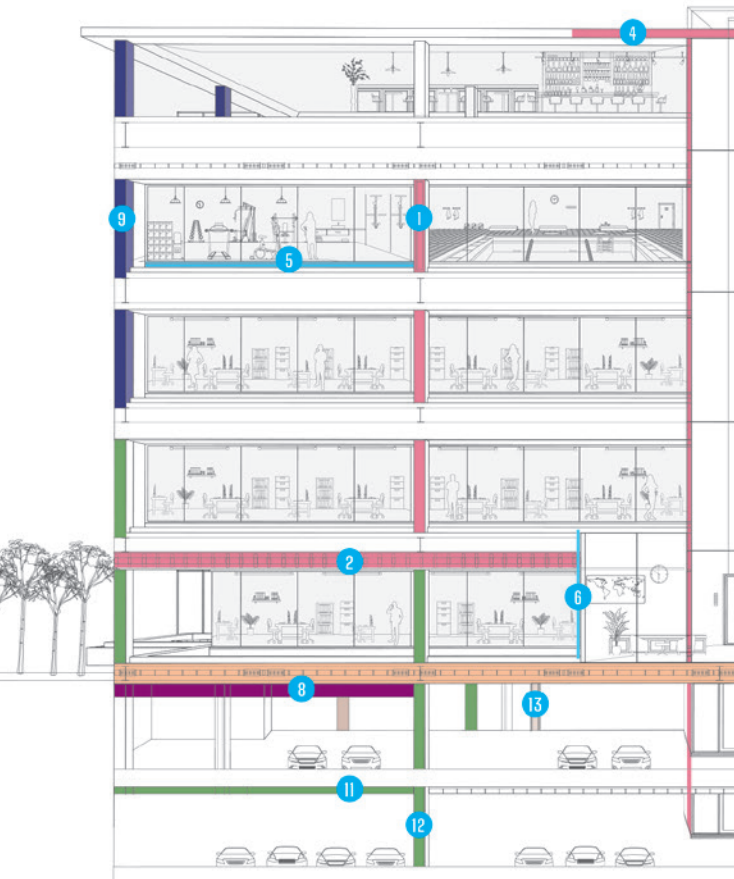
Promat



Product Portfolio Guide

Promat from top to bottom

An overview of Promat applications



COMPARTMENTATION

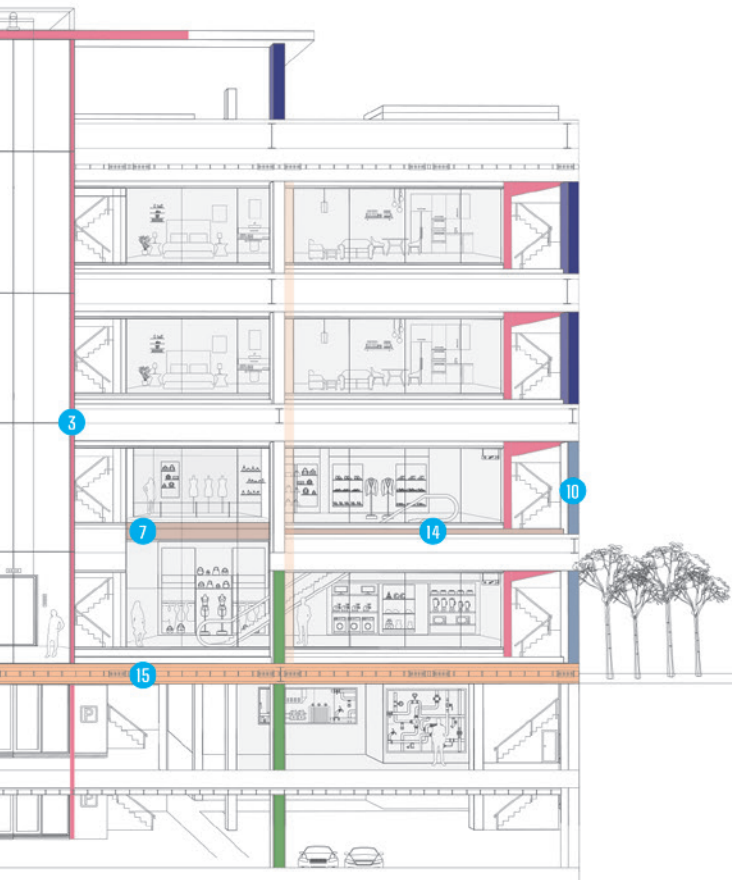
- **SUPALUX®**
Up to 240 minutes fire protection
- 1 Compartment walls
- 2 Timber floors
- 3 Shaftwall
- 4 Protected zones
- **MASTERBOARD®**
Up to 30 minutes fire protection
- 5 Timber floors
- 6 Timber stud partitions
- **PROMATECT®-250**
Up to 120 minutes fire protection
- 7 Mezzanine floors
- **PROMAT TFR®**
- 8 Concrete slab

STRUCTURAL PROTECTION

- **VERMICULUX®-S**
Up to 240 minutes fire protection
- 9 Structural steel
- **PROMATECT®-XW**
Up to 60 minutes fire protection
- 10 Structural steel
- **PROMATECT®-H**
Up to 240 minutes fire protection
- 11 Concrete slab and beams
- 12 Concrete columns and walls
- **PROMATECT®-250**
Up to 120 minutes fire protection
- 13 Wind posts
- 14 Structural steel

CABLE & DUCT PROTECTION

- **PROMATECT®-L500**
Up to 240 minutes fire protection
- 15 Cable and duct protection



Who are Promat?

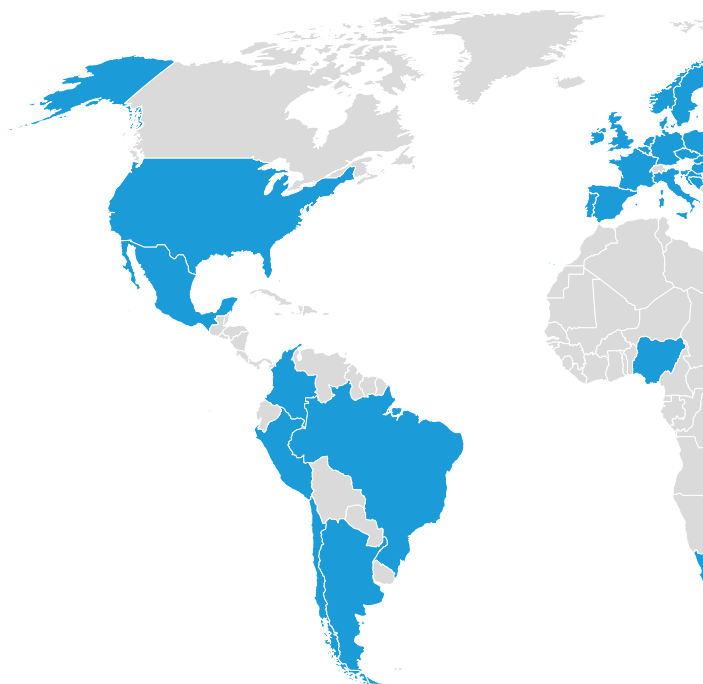
PART OF THE ETEX GROUP

Our research and development

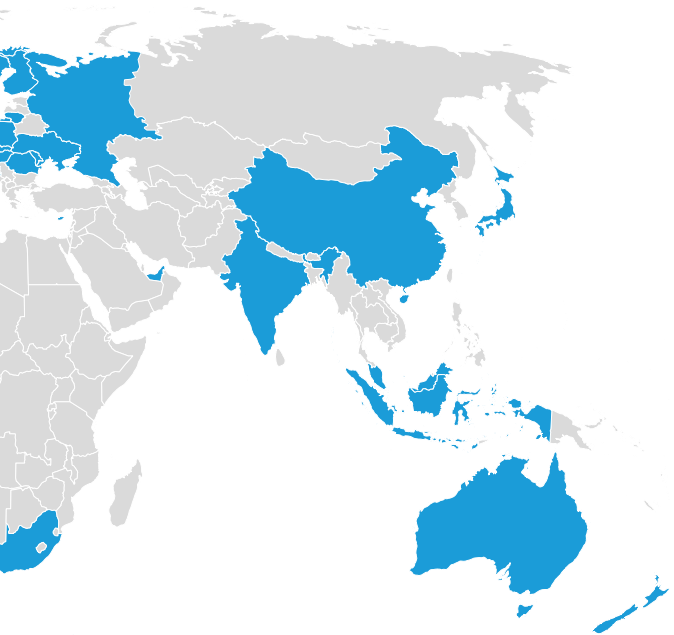
Our researchers constantly look for solutions to develop new, lightweight fire protection solutions that will help reduce our impact on the planet and contribute to the circular economy.

Our expertise

Our dedicated Technical Support team along with our extensive testing, certification and design support tools enable us to provide a superior level of support at every stage of your project.



FOR MORE THAN 60 YEARS, PROMAT HAS BEEN DESIGNING, TESTING AND MANUFACTURING SPECIALIST FIRE PROTECTION SYSTEMS. THIS MEANS THAT OUR CUSTOMERS BENEFIT FROM A COMPLETE PORTFOLIO FROM WHICH TO BUILD A CERTIFIED FIRE SAFETY SOLUTION THAT IS RIGHT FOR THEIR PROJECT.



Promat operates in over 40 countries around the world.

Promat: Specified for a reason



CERTIFICATION AND FIRE TESTING

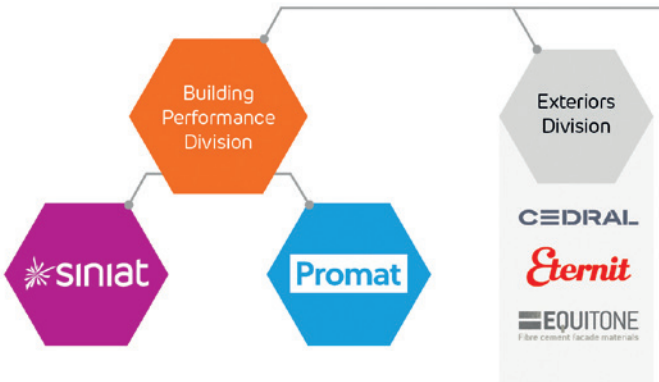
Our products and solutions go through extensive fire testing, which provides primary data that underpins the Third Party Certification across the Promat range. A passive fire protection solution from Promat gives people precious time to escape the building when fire breaks out. This helps firefighters to save lives, whilst also protecting company assets.



Who are Etex?

PART OF THE ETEX GROUP

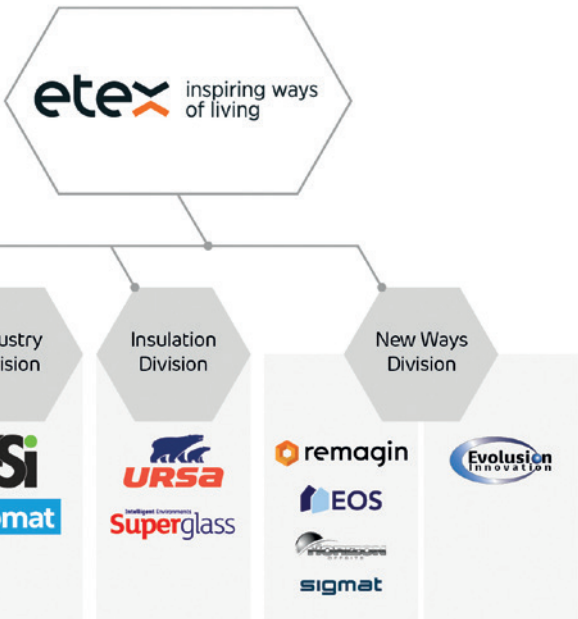
Etex Building Performance is the UK's leading provider of lightweight construction solutions. Our combined expertise in drywall, passive fire protection and steel framing systems has created a range of unique solutions from the building envelope to internal linings, partitions and penetrations. We are proud to be part of Etex, playing a key role in its mission to build living spaces that are ever safer, smarter, and more sustainable. This means that our customers benefit from the certainty and choice from working with a key global manufacturer of interior and exterior building solutions.



“WE’RE COMMITTED TO MAKING SURE OUR CUSTOMER’S PROJECTS BENEFIT FROM HIGH QUALITY FIRE PROTECTION PRODUCTS AND SYSTEMS THAT ARE TESTED, CERTIFIED AND TRUSTED. COMBINED WITH OUR COMMITTED TECHNICAL SUPPORT, WE ENABLE THE BUILDING OF EVER SAFER LIVING AND WORKING SPACES, AS WELL AS MORE SUSTAINABLE INDUSTRIES AND ENERGY SOURCES.

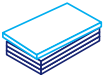
WE’RE EXTREMELY PROUD OF THE HARD-EARNED TRUST OUR CUSTOMERS HAVE IN US AND OUR SOLUTIONS.”

JOSH SLACK, - NATIONAL SPECIFICATION MANAGER, PROMAT



The Promat Product Range

BOARDS



The world's leading producer of calcium silicate and mineral bound matrix fire protection boards based on PROMAXON® patented technology. Promat offers one of the most complete and efficient ranges of boards on the market.

Promat boards include a number of features allowing specification with confidence:

- Non-combustible
- Fully tested and third party certified
- Thermal insulation due to heat absorption properties
- Resistant to humidity and impact
- Durable
- Easy installation
- Complete product traceability

ADHESIVES



Promat offers a range of adhesives and coatings, which, combined with Promat systems, deliver the fire resistance and durability.

FIRE STOPPING AND CAVITY BARRIERS



Our fire stopping range is now available via our sister company FSi under the joint branding of FSi Promat. FSi have over 23 years of specialist knowledge in fire stopping and offer a large range of both fire stopping and cavity barrier products and systems. Visit FSItd.com to find out more.

Promat products are tested to European and British Standards and hold Third Party Certification.



Fire Protection Boards

A comprehensive range of boards for use in systems that can provide passive fire protection from 30 to 240 minutes. Proven and trusted for a wide range of application needs for the construction industry.

SUPALUX®



**UP TO 240
MINUTES FIRE
PROTECTION**

SUPALUX® is a versatile, A1 non-combustible fire resistant board, used in systems capable of 240 minutes fire protection. It is made from calcium silicate, reinforced with selected fibres and fillers. It is formulated without inorganic fibres and does not contain formaldehyde. SUPALUX® is off-white in colour and has a smooth sanded surface on one face with a lightly textured reverse face.

Typical applications:

- Timber and steel frame and solid partitions
- Fire protection to timber floors
- Ceiling linings
- Shaftwalls
- Protected zones

PROMATECT®-H



PROMATECT®-H is an A1 non-combustible calcium silicate board reinforced with selected fibres and fillers and does not contain formaldehyde.



**UP TO 240
MINUTES FIRE
PROTECTION**

Typical applications:

- Protection of concrete columns and beams
- Upgrade of concrete slabs
- Upgrade of concrete walls

PROMATECT®-XW



**UP TO 60
MINUTES FIRE
PROTECTION**

PROMATECT®-XW is a high performance fire protection board, providing up to 60 minutes fire protection to structural steel. PROMATECT®-XW has permanent dimensional stability, reducing the speed at which steelwork heats in the event of a fire, allowing the steel to maintain its load bearing capacity.

PROMATECT®-XW has a smooth impact resistant finish which can be decorated with a plastercoat or paint if required. It combines excellent weather resistance with quick installation, and can be installed before the building is weathertight for up to 6 months, with no impact on fire performance.

Typical applications:

- Universal columns and beams (I or H sections) and joists
- Beams supporting composite floors with profiled metal decking
- Structural hollow sections
- Perimeter beams
- Lattice beams
- Bracing

VERMICULUX®-S



UP TO 240
MINUTES FIRE
PROTECTION

VERMICULUX®-S is an A1 non-combustible calcium silicate board which provides up to 240 minutes fire protection to structural steel. VERMICULUX®-S has permanent dimensional stability, so in the event of a fire it reduces the speed at which the steelwork will heat up, allowing it to maintain its load bearing capacity for longer.

Typical applications:

- Structural steelwork

PROMATECT®-250



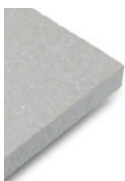
UP TO 120
MINUTES FIRE
PROTECTION

PROMATECT®-250 is a PROMAXON® mineral bound board, used for fire protection of structural steel and steel joisted mezzanine floor constructions. PROMATECT®-250 is off-white in colour and has a smooth surface for ease of decoration.

Typical applications:

- Structural steelwork
- Mezzanine floors
- Wind posts

MASTERBOARD®



MASTERBOARD® is an A1 calcium silicate board reinforced with selected fibres and fillers. It is formulated without inorganic fibres and does not contain formaldehyde. It is off-white in colour and has a smooth sanded finish on one face with a lightly textured reverse. It can be left undecorated or can be easily decorated with paints, wallpapers or tiles.

Typical applications:

- Soffit, porch or canopy linings
- Wall and roof linings
- BBA Agrément Certificate No. 18/5593
- Integral garage ceilings
- Partitions

PROMATECT®-HD



PROMATECT®-HD is an A1 high density, calcium silicate board which has been formulated without any inorganic fibres.



**CAN BE FULLY
EXPOSED**

Typical applications:

- Wall cladding and infill panels

PROMATECT®-L500



PROMATECT®-L500 is a low density calcium silicate board, used for the construction of fire resistant ducts, cladding of sheet metal ducts and to provide fire rated cable and service enclosures.



UP TO 240
MINUTES FIRE
PROTECTION

Typical applications:

- Ductwork
- Cable protection
- Service enclosures

PROMAT SHAFTWALL® METAL



UP TO 120
MINUTES FIRE
PROTECTION

Promat SHAFTWALL® Metal profiles form part of the SUPALUX® shaftwall systems, providing up to 120 minutes integrity and insulation performance.

Thermal Upgrade Boards

Boards with inbuilt insulation to provide thermal upgrades for structural slabs.

PROMAT TLFR BOARD®



Promat TLFR Board® is a high-density calcium silicate board bonded to stone wool insulation and is designed to be fixed to the underside of concrete floors. Promat TLFR Board® is non combustible and has excellent thermal performance.

Typical applications:

- Thermal upgrade for underground car parks and concrete soffits

Fireplace Products

PROMAFOUR® Systems provide the ideal solution for the construction of false chimney breasts for cassette/inset type fire places and lining existing masonry fireplaces. The PROMAFOUR® System is a safe, reliable, robust system developed to resist continuous high temperatures of up to 1000°C.

PROMAFOUR® SYSTEMS



**CAN WITHSTAND
UP TO 1000°C**

System components:

- PROMAFOUR® Boards for the fire surrounds and mantelpiece
- PROMAFOUR® Studs for the support structure
- PROMASIL® 1000L Insulation Boards
- PROMAFOUR® Glue 1000 for bonded assembly
- PROMAFOUR® HT Joint filler for finishing
- PROMAFOUR® Primer

PROMAFOUR® BOARDS



PROMAFOUR® boards are cement bonded calcium silicate based insulation boards. These large-sized multi-purpose boards are easy to handle and offer a superior combination of enhanced technical properties for building strong, mechanically self-supporting constructions.

PROMAFOUR® boards form part of the PROMAFOUR® fireplace insulation system.

PROMAFOUR® boards are also suitable for use behind a wood burning stove or heating appliance.



HETAS ID: AAC159

PROMAFOUR® Ancillaries

PROMASIL® 1000L



PROMASIL®-1000L are large-size, lightweight insulating boards with excellent mechanical and thermal characteristics.

PROMAFOUR® GLUE 1000



PROMAFOUR® -HT JOINT FILLER



PROMAFOUR® PRIMER



Adhesives and Finishing

Non-combustible joint filler and adhesives for fixing and jointing boards, and filling gaps.

PROMAT MOISTURE RESISTANT READY-MIXED JOINT FILLER



Promat Moisture Resistant Ready-Mixed Joint Filler is supplied in paste form. Easy to apply and sand, providing an excellent, smooth finish. The characteristic low shrinkage minimises usage and hairline cracks at the joint.

Typical applications:

- Joint filler for ceilings, partitions and linings

PROMACOL[®]-S



PROMACOL[®]-S is a silicate-based adhesive used in fire protection systems. In particular, it is used in combination with PROMATECT[®]-L500.

Typical applications:

- Ventilation and smoke extraction ducts
- Service enclosures

PROMACOL®-K84/500



PROMACOL®-K84/500 is a silicate based adhesive used in fire protection systems. In particular, it is used in combination with PROMATECT®-H boards. PROMACOL®-K84/500 is an inorganic, solvent-free adhesive based on water glass, modified with special fillers.

Typical applications:

- Bonding cement-bound calcium silicate building boards, vermiculite boards and stone wool for all applications
- Upgrading concrete as part of the PROMATECT-H® system

Promat Board Selector

	DIMENSIONS			APPLICATIONS				PERFORMANCE AND CERTIFICATION					PROPERTIES					ENVIRONMENT				
	Thickness (mm)	Length (mm)	Width (mm)	Compartmentation	Structural protection	Shaftwall	Duct and Services Enclosures	Minutes of fire resistance	Fire reaction class: A1 non-combustible to EN13501-1	Hetas approved product AAC159	Complies with building regs. part J	Manufactured under ISO 9001 / ISO 14001 systems	Third party accreditation	Impact Resistant	High dimensional stability	High thermal capacity	Slim constructions	Does not require plastering	Fully Exposed Use (for up to six months)	Permanent Semi External Use	Internal use	Can be installed before building is weathertight
PASSIVE FIRE PROTECTION BOARDS																						
SUPALUX*	6, 9, 12, 15	2440	1220	●		●		240	●			●	●	●	●		●	●		●	●	●
	20, 25	2500	1250																			
VERMICULUX*-S	20, 25, 30, 35	2500	1200		●			240	●			●	●	●	●		●	●		●	●	●
PROMATECT*- L500	20, 25, 30, 35, 40, 50, 52	2500	1200				●	240	●			●	●	●	●		●	●		●	●	●
PROMATECT*-H	12, 25	2500	1250		●			240	●			●	●	●	●		●	●		●	●	●
PROMATECT*- XW	15	2500	1200		●			60	●			●	●	●	●		●	●	●		●	●
PROMATECT* 250	15, 20, 25	2500	1200	●	●			120	●			●	●	●	●		●	●		●	●	●
PROMATECT* HD	9	2440	1220					-	●			●	●	●	●		●	●	●		●	●
MASTERBOARD*	6, 9, 12	2440	1220	●				30	●			●	●	●	●		●	●		●	●	●
THERMAL UPGRADE BOARDS																						
Promat TLFR Board*	136, 166	600	1200					-				●	●		●						●	
Fireplace Products																						
PROMAFOUR* SYSTEMS																						
PROMAFOUR* Boards	12, 15	2500	1250	●				-	●	●	●	●	●	●	●	●	●	●			●	
PROMAFOUR* Studs	18	2500	68	●				-	●	●	●	●	●	●	●	●	●	●			●	
PROMASIL* 1000L	30, 50	2500	1200	●				-	●	●	●	●	●	●	●	●	●	●			●	

GB Orderline

For placing orders, delivery enquiries, finding local stockists and other order-based enquiries.

0800 373 636 (Select option 1)
sales.construction@promat.co.uk

Customer Support

For any problems with invoices or deliveries.

0800 373 636 (Select option 2)
customersupport@promat.co.uk

Technical Services

For technical support and advice.

0800 145 6033 (Select option 2)
technical@promat.co.uk

www.promat.com/en-gb/construction/

Etex Building Performance Limited

Gordano House, Marsh Lane,
Easton-in-Gordano,
Bristol, BS20 0NE

01275 377 773
promat.com

© Etex Building Performance Limited

0620-PRO V1(j)/10/2023

