

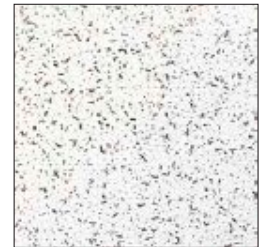


## Fission ND

Classical non-directional pattern.

## Key Features

- ✓ Fissured pattern
- ✓ Ideal for offices and warehouses
- ✓ Good sound absorption



| Edge Detail        | Board   | Tegular24                      |
|--------------------|---|--------------------------------|
|                    |   |                                |
| Thickness (mm)     | 15  | 15                             |
| Modules (mm)       | 600 x 600 ..... 9102M<br>1200 x 600 ..... 9101M | 600 x 600 ..... 9105M          |
| Suspension Systems | Gridline 24 Butt Cut / Joggled                  | Gridline 24 Butt Cut / Joggled |
| Colour             | Global White                                    |                                |

## Sustainability



51%

## Acoustics



EN ISO 354  
& EN ISO 11654



EN ISO 10848-2  
& EN ISO 717-1



EN ISO 140-3  
& EN ISO 717-1

|                  | Hz $\alpha_p$ |           |       |       |      |      |      |      |      |      |      |
|------------------|---------------|-----------|-------|-------|------|------|------|------|------|------|------|
|                  | $\alpha_w$    | $D_{nfw}$ | $R_w$ | Class | NRC  | 125  | 250  | 500  | 1000 | 2000 | 4000 |
| Board, Tegular24 | 0.55(H)       | 34 dB     | -     | D     | 0.55 | 0.30 | 0.35 | 0.50 | 0.65 | 0.70 | 0.80 |

## Fire Reaction



Euroclass A2-s1, d0  
EN 13501-1

## Performances & Features



82%



70% RH



3.4 Kg/m<sup>2</sup>



If you would like to order a sample or have any queries about this product please contact our Technical Sales Team on **0800 371 849** or email [info@zentia.com](mailto:info@zentia.com)

TDS 074.3.03.25