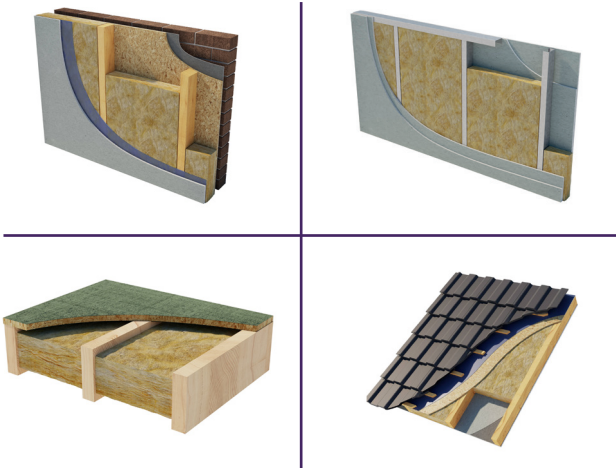


Adapt Slab 35.

February 2025 | Data Sheet

Typical Applications.



Description.

Superglass Adapt Slab 35 is a non-combustible glass mineral wool insulation slab. The flexible slab is supplied at 400mm & 600mm widths to allow friction fitting between common stud/joist spacings, minimising gaps at joints and reducing on-site cutting & waste.

Application.

Superglass Adapt Slab 35 is designed to provide both thermal and acoustic insulation for various applications, including:

- Light gauge steel framing systems (between studs only)
- Party & separating walls
- Internal partition walls
- External timber frame walls
- Internal & separating floors
- Suspended timber ground floors
- Warm pitched roofs.

Performance.

Thermal Conductivity:

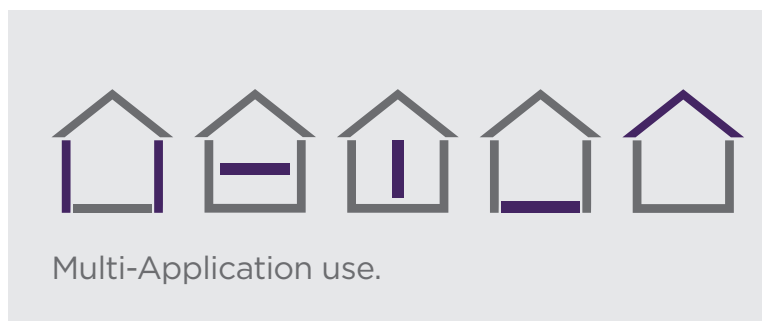
Declared thermal conductivity (λ value) of 0.035W/mK.

Density:

Manufactured at a nominal density of 22kg/m³.

Fire Classification:

Deemed non-combustible with a fire classification of Euroclass A1 (the highest possible rating) when tested to BS EN 13501-1:2018 Reaction to Fire.



Acoustic
Insulation



Thermal
Insulation



Non-
combustible



Recycled
Glass Content

Intelligent Environments
Superglass

superglass.co.uk

Adapt Slab 35.

Technical Characteristics.

Product Specification.

Thickness (mm)	Length (mm)	Width (mm)	Slabs per pack	Pack Area (m ²)	Packs per pallet	Thermal Conductivity (W/mK)	Thermal Resistance (m ² K/W)	Product Code
50	1200	600	16	11.520	20	0.035	1.40	2144950
70	1200	600	12	8.640	20	0.035	2.00	2144961
90	1200	600	10	7.200	20	0.035	2.55	2144962
100	1200	600	8	5.760	20	0.035	2.85	2144963
140	1200	600	6	4.320	20	0.035	4.00	2144964
150	1200	600	6	4.320	20	0.035	4.25	2144965

Thickness (mm)	Length (mm)	Width (mm)	Slabs per pack	Pack Area (m ²)	Packs per pallet	Thermal Conductivity (W/mK)	Thermal Resistance (m ² K/W)	Product Code
100	1200	400	8	3.840	36	0.035	2.85	2144966
140	1200	400	6	2.880	36	0.035	4.00	2144967

Please note that all dimensions are nominal.

Additional Information.

Vapour Resistivity.

The product has a nominal vapour resistivity of 5 MNs/gm.

Environmental credentials.

- Our products and their pallets are wrapped in low-density polyethylene (LDPE4) plastic, which contains a minimum 30% recycled material and is fully recyclable. Before recycling, please consult your local authority for guidance.
- ISO 14001:2015 - Environmental Management Systems (EMS) certified. Certificate number: EMS 646508.
- Contains no ozone-depleting substances or greenhouse gases. For more information, please refer to the Environmental Product Declaration (EPD).
- Manufactured from up to 84% recycled glass.
- Generic BRE Green Guide Rating of A+.

Standards and Approvals.

Manufactured in accordance with:

- BS EN 13162:2012(+A1:2015) Thermal insulation products for buildings - Factory made mineral wool (MW) products.

- BS EN 13172: 2012 Thermal insulation products - Evaluation of conformity.
- ISO 9001:2015 - Quality Management Systems (QMS). Certificate number: FM 02264.

Certifications.

- UKCA certified to BS EN 13162:2012+A1:2015. Certificate number: 0086 CPR 469699.
- CE marked to EN 13162:2012+A1:2015. Certificate number: 0751-CPR-399.0-01.

Handling & Storage.

The product should be stored properly and handled in such a way as to ensure that the product remains clean and undamaged.

The product is supplied compression packed in polythene to provide short term protection only. For long term protection, the product must be stored indoors, or under a waterproof covering and off the ground to protect from weather damage. The product should not be left permanently exposed to the elements.

All Superglass products are non-hygroscopic, will not rot, degrade, or sustain vermin and will not encourage the growth of mould, bacteria, or fungi.

Intelligent Environments
Superglass

UK
CA

CE

bsi. ISO 14001:2015
Environmental Management

bsi. ISO 9001
Quality Management

BRE / Global
Verified
EPD

MADE IN
BRITAIN®

NBS Source
PARTNER

Etex UK Insulation Ltd | Thistle Industrial Estate | Kerse Road | Stirling | FK7 7QQ | UK

ADD35004
February 2025

Technical

Hotline: 0808 1645 134
Email: technical.stirling@etexgroup.com

Customer Services

Tel: 01786 451170
Email: customerservice.stirling@etexgroup.com

Social

✉ [superglass_uk](https://www.superglass-uk.com)
in [superglassuk/](https://www.superglassuk/)
f [superglassinsulationuk](https://www.superglassinsulationuk.com)